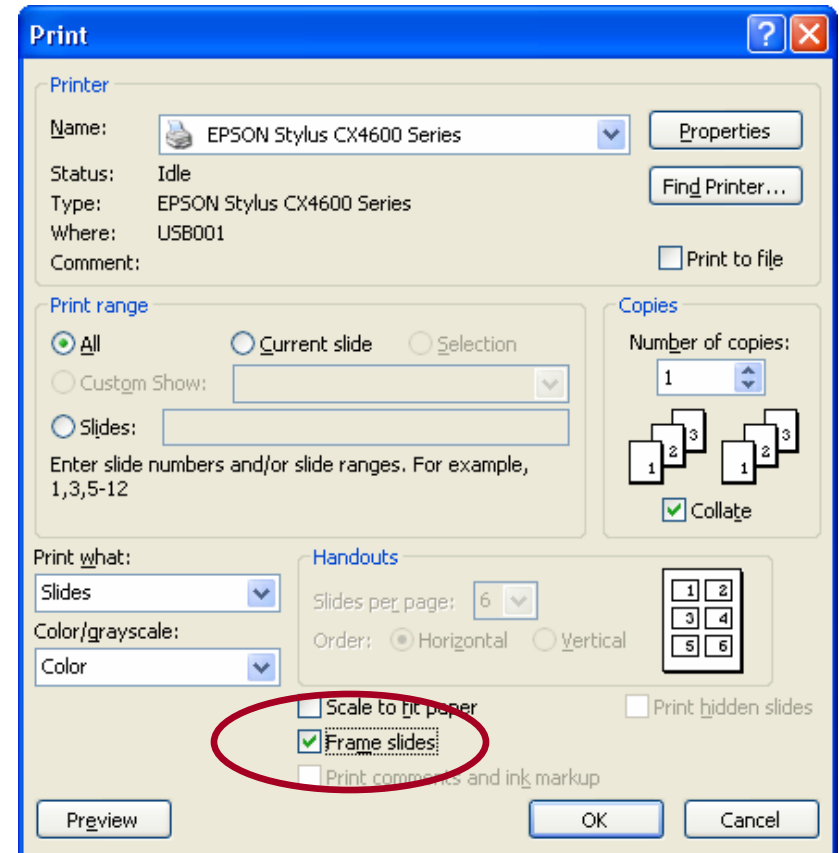


## Sample Cover Page

For customized cover pages, contact  
"Cor Marketing Group"

# How to Print

- For more professional looking handouts, make sure to select the *“Frame slides”* option on the print menu.



# Layout Recommendations

- Place client logo at the bottom right corner
  - **DO NOT** use a logo copied from client's website
  - Email "Cor Marketing Group" for more logos or help
- White space is essential
  - A tasteful slide with white space can convey a message better than a cluttered slide full of text and images
- Avoid animation and do not use animated slide transitions

# Font Recommendations

- Use **Arial Narrow** for all text, including diagram text
- Use Arial if you are showing the presentation in an exceptionally large room where visibility might be a concern
- Use Arial if you plan to reduce your monitor resolution to 640x480
  - Do not use a font size smaller than 20, unless you intend to use the presentation as handouts only

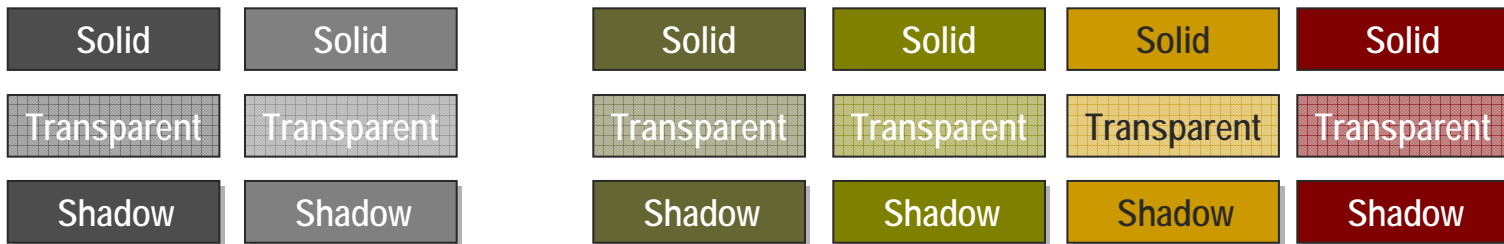
# Image Options

- **DO NOT** use images copied from the web (copyright issues to consider)
- For customized cover pages or specific images to convey your idea contact your local document management group or "Cor Marketing Group"

# Colors & Diagrams

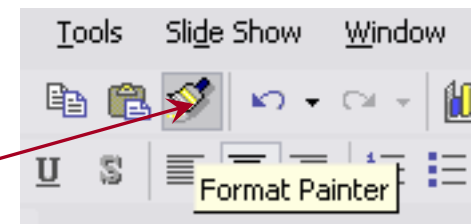
Suggested dominant colors and accent colors for diagrams

Contact "Cor Marketing Group" for help enhancing your diagrams and charts



Tip: if you want a shadowed graphic, place text in separate text box, otherwise, text will look "doubled" when printed

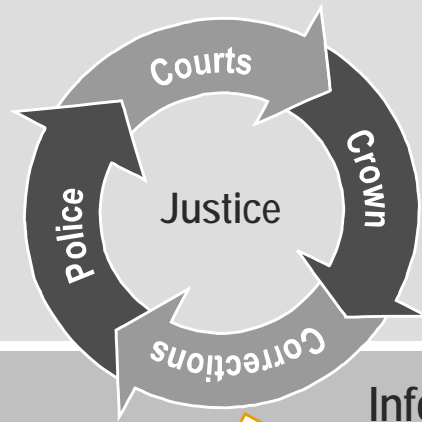
Use the "Format Painter" option, to pick one of the styles above and apply to your diagram



# Sample Diagram

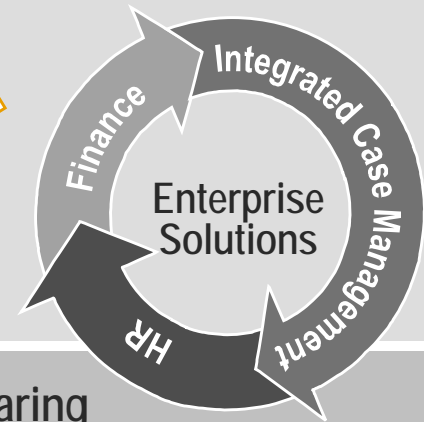
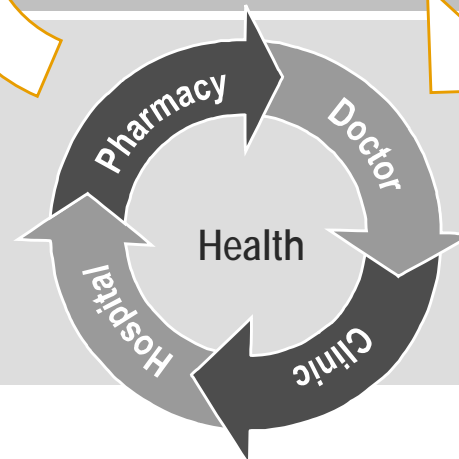
For assistance with diagrams, please contact "Cor Marketing Group"

State of Connecticut  
Offender Based  
Tracking System



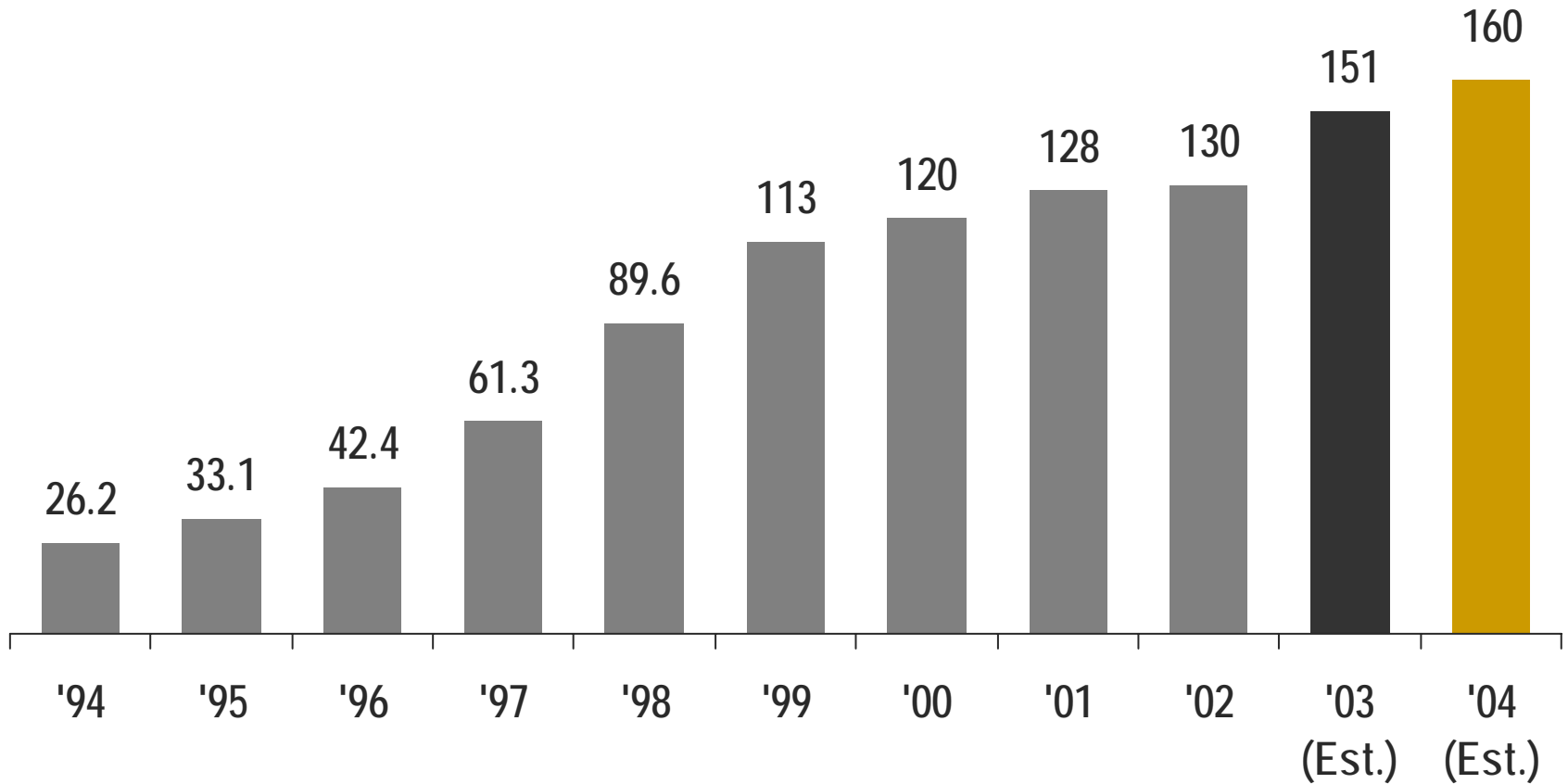
Information Sharing  
Inter-operability

Capitol Health Authority  
Electronic Health Record



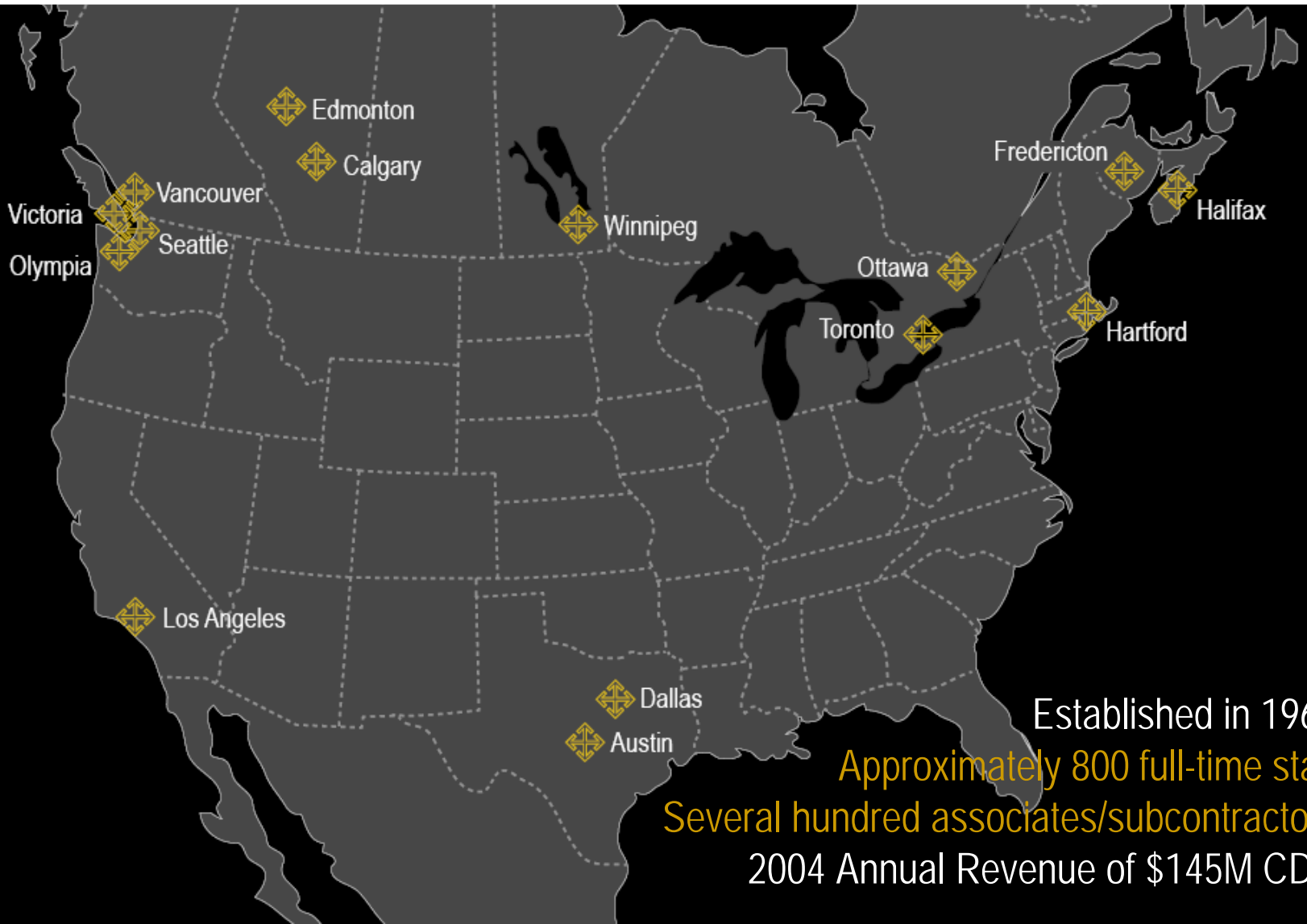
# Charts & Colors

For assistance enhancing your charts and making them consistent throughout the presentation, please contact "Cor Marketing Group"





# Operating Locations



Established in 1966  
Approximately 800 full-time staff  
Several hundred associates/subcontractors  
2004 Annual Revenue of \$145M CDN